

Landscape Plan

Tree Stock
Trees to comply with BS 3936-1 Nursery stock, and should have an upright, straight central leader and a well balanced branching head of a form and habit natural to the species. Rootballed trees shall be supplied with roots balled and securely wrapped to ensure that the soil and roots remain moist and intact until planting. Trees shall have been carefully lifted and conserving a suitable proportion of fibrous roots to aid transplanting.

Tree Planting
To BS 8545 (2014 -from nursery to independence). Excavate planting pit to ensure a minimum depth of 600mm topsoil. Fork over the base of the pit to achieve an even rill 225mm deep. Supply slow release fertiliser 16-18 month Osmocote at the rate of 30gms/pit placing plant in position and

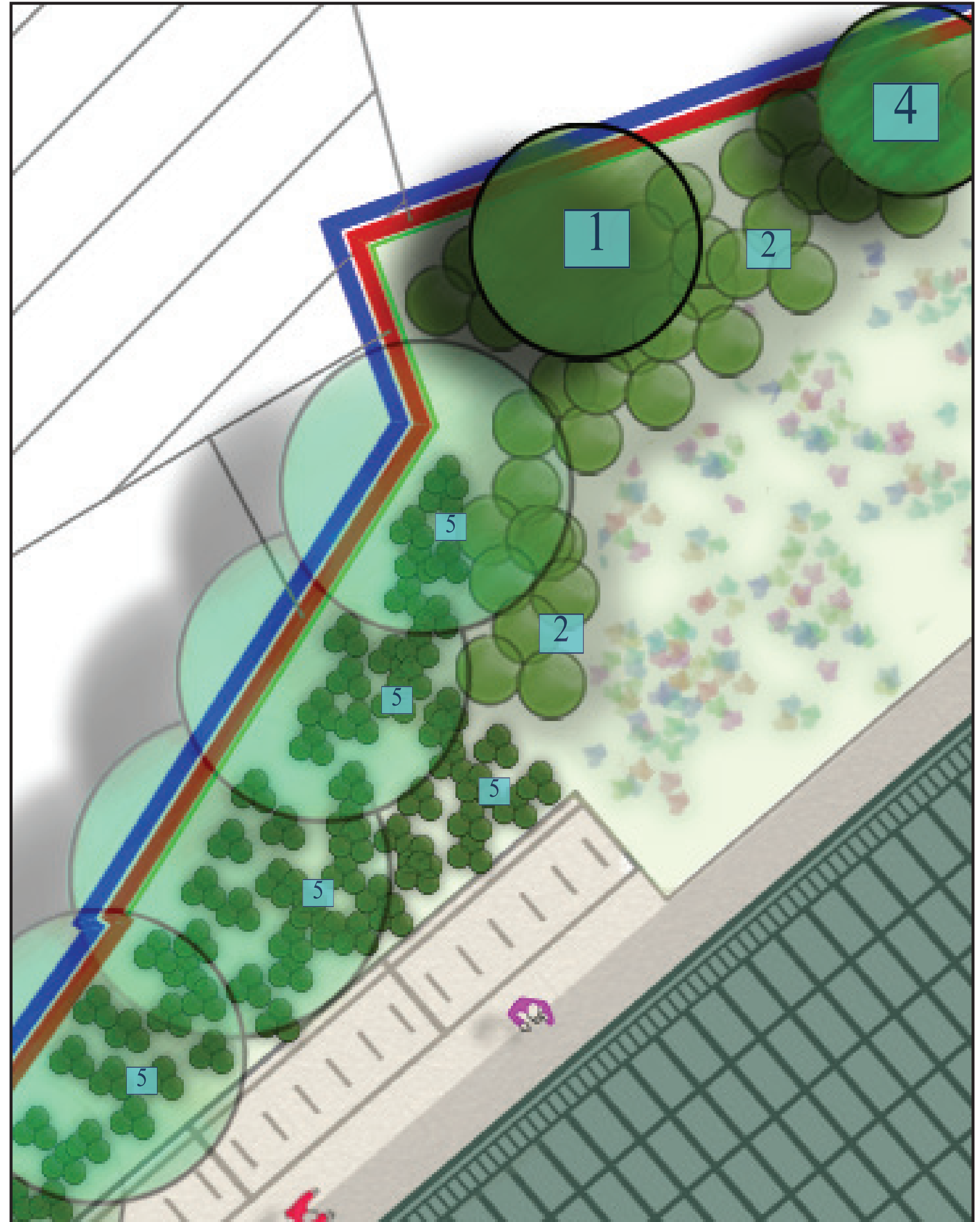
Stakes
Stakes shall be of peeled larch, Pine or Douglas Fir, preserved to manufacturer's recommendation. Stakes shall be turned and pointed one end. For tree size 6-8 up to 10-12cm use single stake. For tree sizes 12-20cm girth sizes use two stakes with cross member. Use 2 stakes per tree set max. 500mm from tree. Stakes shall be min 1500mm * 100mm dia. Height above ground level of 600mm. The stake is to be driven with a drive all, wooden maul, or cast iron headed mallet, not with a sledge hammer. Stakes shall be buried approx 500mm into ground.

Tree Ties
Tree ties shall be of rubber, pvc or other suitable composition and durable enough to hold tree securely for three years. Ties will be min. 25mm wide, fitted with a buckle for adjustment. Ties to be nailed to the stake with one galvanised nail im-

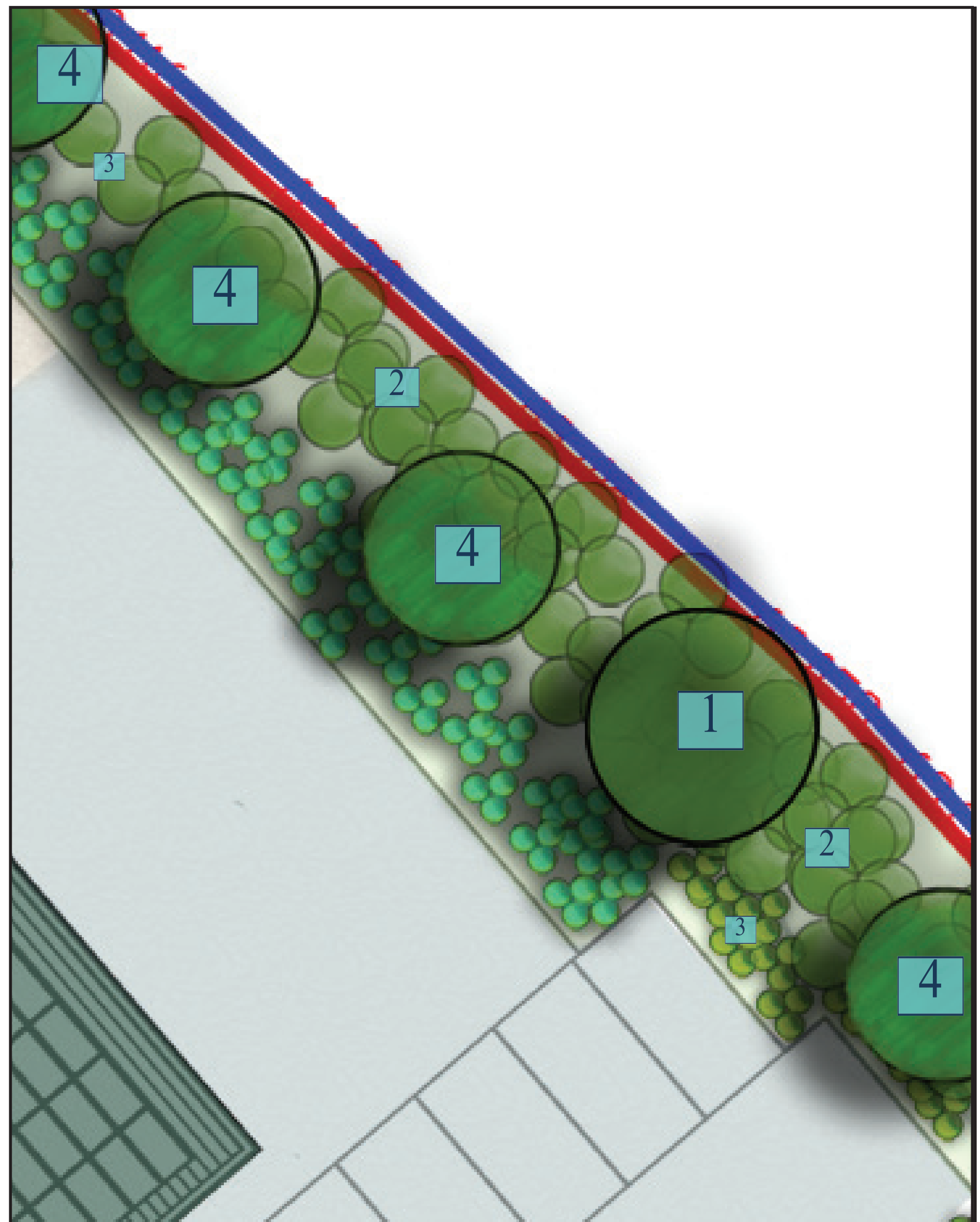
Weed Control
All planting beds to be maintained free of weeds through regular spot treatment for the duration prior to handover. Note particular care must be exercised to avoid spray damage or drifts onto adjoining plants.

It is contractors responsibility to monitor ground conditions and weed germination and to put in place a regular treatment programme to ensure that weeds are controlled through the planting at all times.

Irrigation
It is the contractors responsibility to ensure that all planting is adequately watered during the growing season, particularly during periods of drought or to agree with the main contractor prior to pricing the works if they or client are responsible for ongoing irrigation.



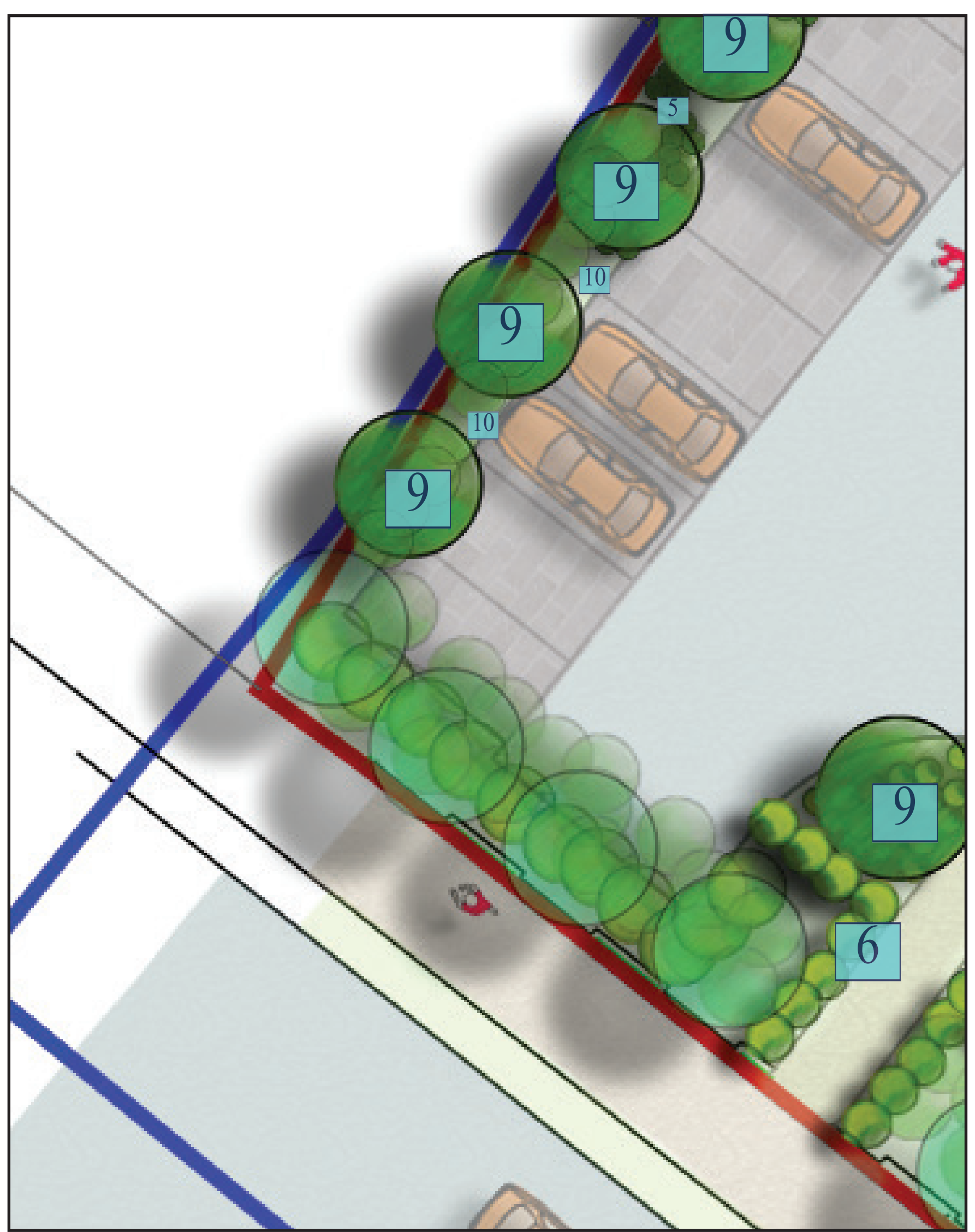
Perimeter Extract Area A Scale: 1:100 @ A0 / 1:141 @ A1 / 1:200 @ A2



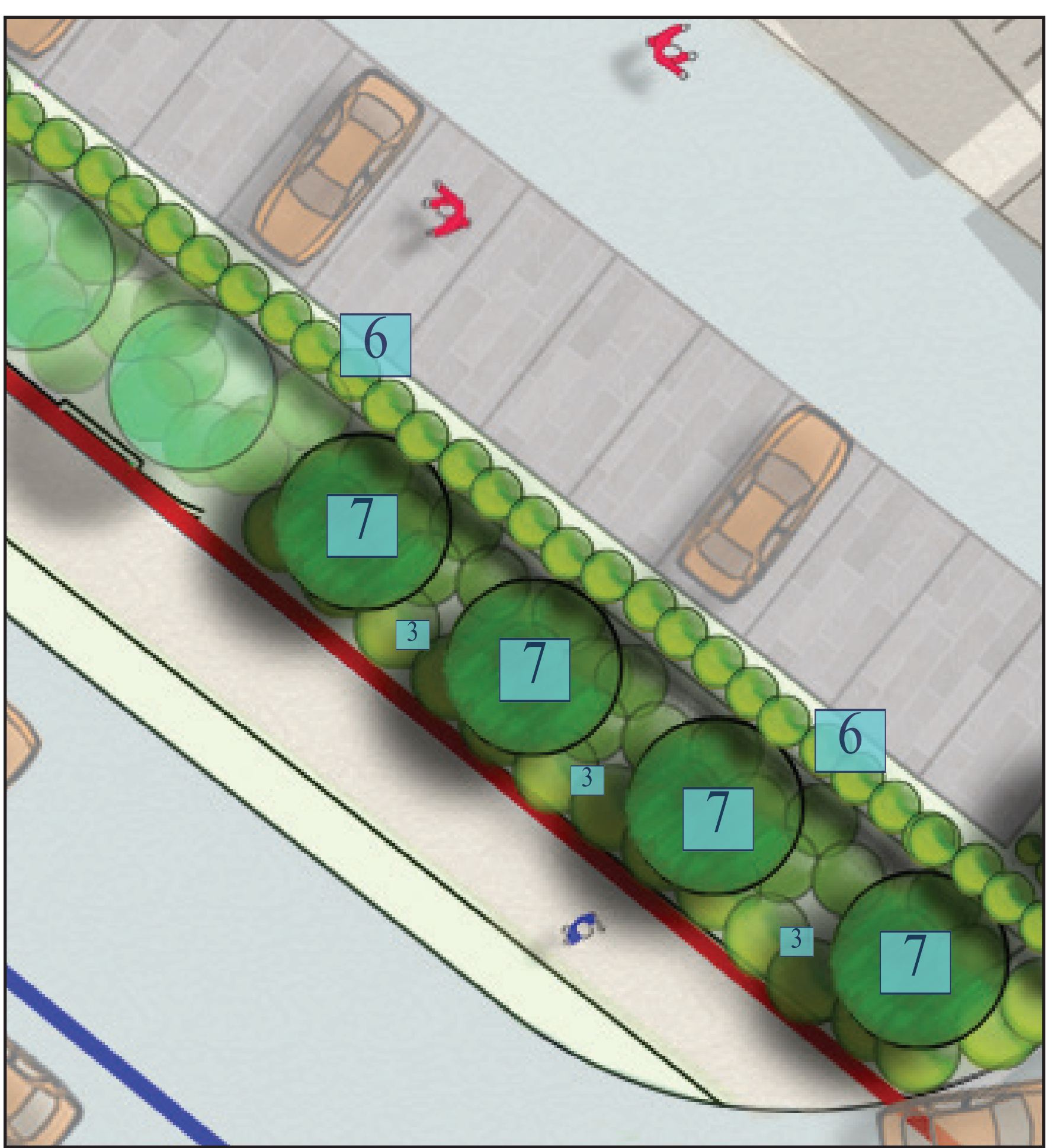
Perimeter Extract Area B Scale: 1:100 @ A0 / 1:141 @ A1 / 1:200 @ A2



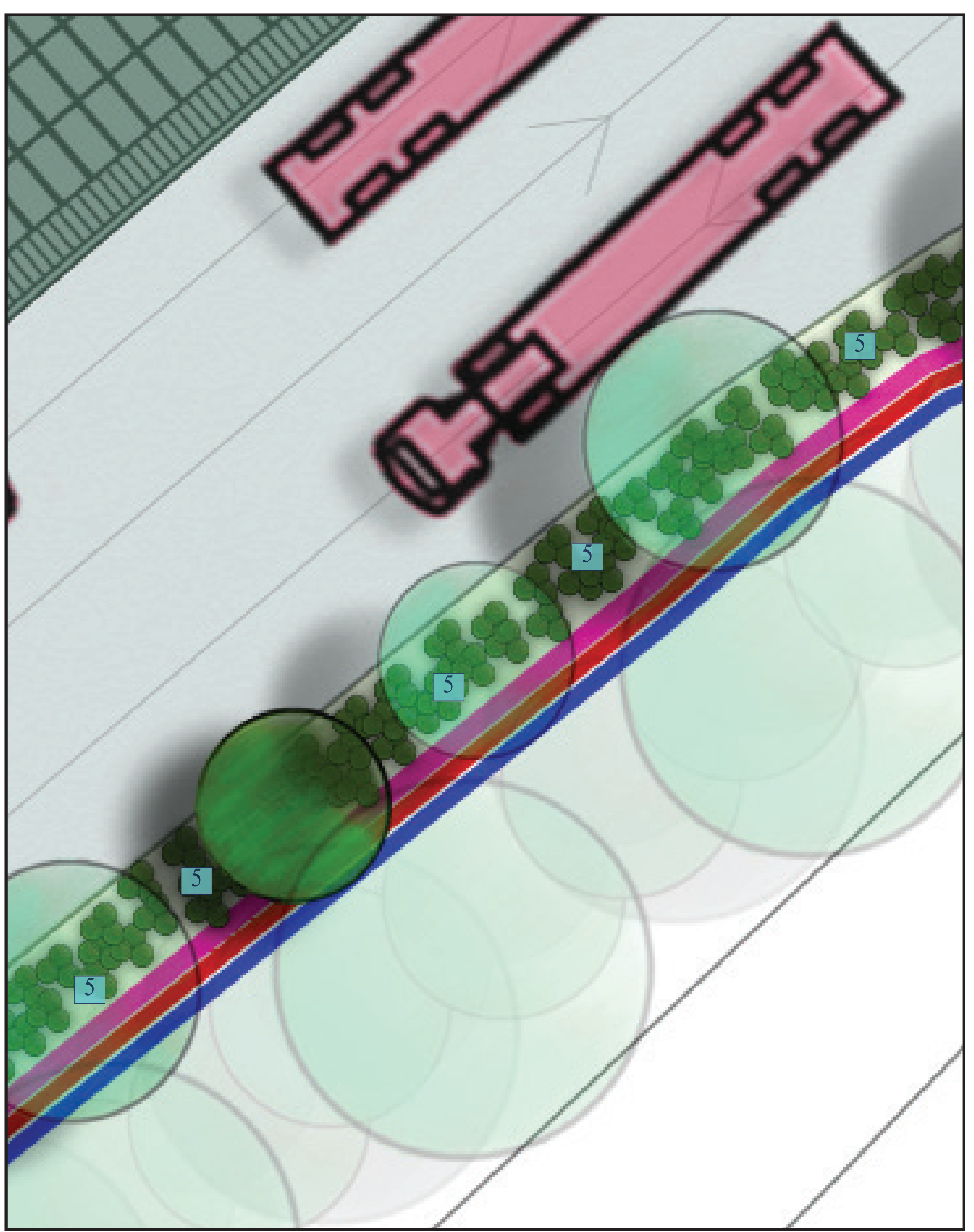
Perimeter Extract Area C Scale: 1:100 @ A0 / 1:141 @ A1 / 1:200 @ A2



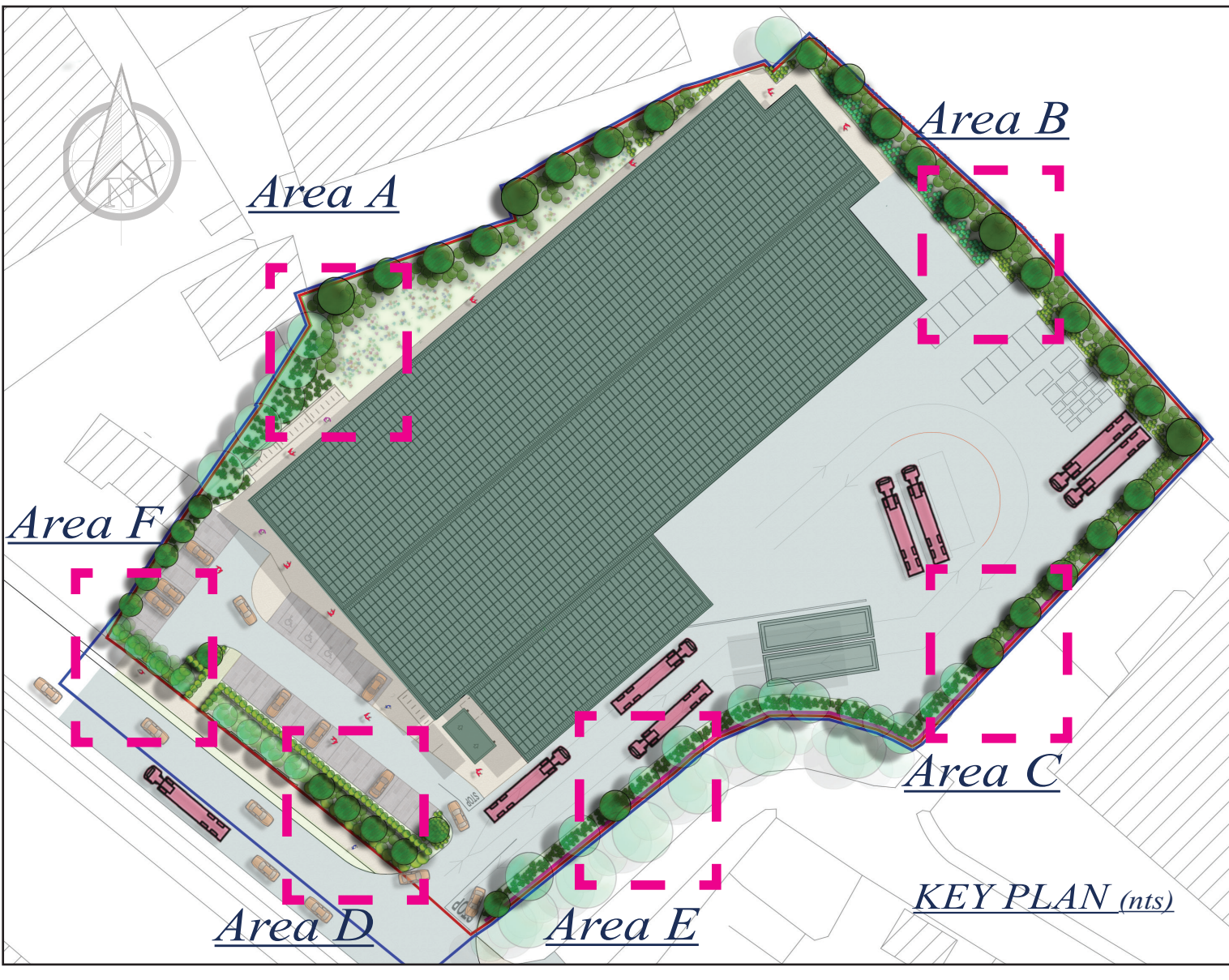
Perimeter Extract Area D Scale: 1:100 @ A0 / 1:141 @ A1 / 1:200 @ A2

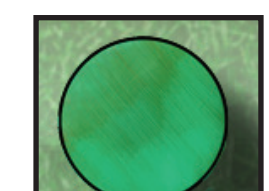
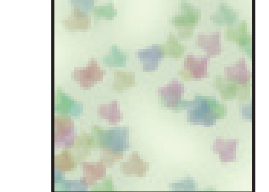



Perimeter Extract Area D Scale: 1:100 @ A0 / 1:141 @ A1 / 1:200 @ A2



Perimeter Extract Area E Scale: 1:100 @ A0 / 1:141 @ A1 / 1:200 @ A2



-  Denotes Existing trees, hedgerows and shrub planting to be retained
-  Denotes species rich grassland area, as per spec opposite
-  Denotes Planting Type Please refer to Planting Schedule

Project : Landscape Proposals - Starrus Eco Holdings Ltd
 Drawing No. : 23/ORS/SEHL/02
 Date : November 27th 2023
 Client : Starrus Eco Holdings Ltd.
 Notes :

Planting Schedule

Please refer to items as numbered on attached plan.

Key	Plant name	Size	% Mix
Primary Structure trees			
Primary structure trees for long term focal points at key corners of substance as larger specimens at intervals where space permits through the perimeter areas.			
1	Quercus robur Fastigiata	RB 16-18	As shown
Screening buffer Mix - Secondary trees			
A selected mix of forms and growth habits containing rapid growing trees and trees selected for their generally upright form and canopy cover. Mid size trees for soft visual buffering and veiling, manageable growth rate and habit.			
The mixed whip planting to form a dense buffer over time and supplement primary trees. Consists of a range of native varieties together with other appropriate varieties with contrasting forms, textures and growth rates.			
2	Plant at 1.8 centres throughout the areas shown		
	Alnus glutinosa	BR 90-120cm ht	30%
	Pinus sylvestris	BR 30-50cm ht	15%
	Betula pubescens	BR 90-120cm ht	30%
	Prunus avium	BR 90-120cm ht	5%
In addition to the above, plant the following as advanced feathered whips:			
	Alnus glutinosa	BR 150-180cm ht	10%
	Betula pubescens	BR 150-180cm ht	10%
Understory Fringe			
Located as fringe trees / understory towards the outer canopy edge to front the buffer adjoining the yard side.			
3	Plant at 1 centres throughout the areas shown		
	Corylus avellana	BR 60-90	20%
	Ilex aquifolium	5L 50-60	30%
	Rosa canina	BR 40-60	10%
	Viburnum opulus	BR 60-90	20%
	Euonymus europaeus	BR 60-90	20%

Short Term Rapid screening trees

Rapid growing screening plants. Planted at larger initial sizes. All to be feathered plants (furnished / branched to base). The intention is that these trees will be planted for the development of an initial rapid screen. May be thinned and removed from the scheme on a phased basis over 10-15 years as the principal long term screening develops and matures.

4	Plant into the screen mix at locations as shown		
	Alnus cordata	BR 8-10	

Understory Shade Planting

A shade tolerant mix for planting under the existng tree canopy areas

5	Plant the following at 600mm centres, with min 20 no. plants per plant grouping. Informal drifts.		
	Ilex aquifolium	5L 50-60	
	Prunus Ottoluyken	2L 30-40	
	Lonicera pilata	2L 30-40	

Plant the following as a groundcover carpet towards the outer hardstanding side of the planting as a lower level edge to the ranging from 1.5-2m wide. Plant at 7m2

	Hedera helix hibernica	p9	
--	------------------------	----	--

New hedgerow at Car Park

Plant a biodiverse native hedge to front the existing boundary and Laurel understory. A mix of native hedging plants for

6	The above areas to be planted with mixed native hedgerow consisting of the following plants planted at 300mm centres		
	Crataegus monogyna	BR 60-90	70%
	Rosa canina	BR40-60	5%
	Ligustrum vulgare	BR 60-90	15%
	Viburnum opulus	BR 60-90	5%
	Euonymus europaeus	BR 60-90	5%

Screening band at front (south-eastern boundary)

7	Line of screening trees to link existing tree line to new entrance area.		
	Acer platanoides Emerald Queen	BR 16-18	As shown
	Understory infill as per understory fringe planting as above.		

Swale Area			
Plant a biodiverse low to mid size mix for the swale depression.			
Plant with the following low carpeting and pollinator mix, planted in informal large drifts throughout the swale area. Plant at 7m2.			
	Hedera hibernica	p9	60%
	Crocsmia Babyton	p9	25%
Plant the following in random informal grounds through the groundcover planting Min 15 plants per group			
	Luzula nivea	2L	7%
	Liberia grandiflora	2L	8%
Ornamental planting Islands at Car Park and Northern boundary			
Trees in the island planting areas as shown as a line along the western boundary adjoining car park where existng conifers are to be removed.			
9	Malus tschonoskii	BR 14-16	As shown
Selected ornamental groundcover planting for planting with emphasis on plants selected form the All Ireland Pollinator Plan recommendations			
10	Plant in informal groups at the spacings indicated, selected from the following varieties, with minimum 6 plants per group.		
	Mahonia aquifolium		
	Geranium Rozanne		
	Euphorbia amygdaloides		
	Sarcococca humilis		
	Lamium maculatum		
	Liberia grandiflora		
	Hebeboris orientalis		
	Verbenia bonariensis Lollipop		
	Stipa Polyata		
	Crocsmia Lucifer		
	Obetis sempervirens		
	Lavandula hidote		
	Skimmia japonica		
	Rosemarinus officinalis prostratus		
	Geranium Waigrave Pink		
	Bergenia cordifolia	BR 14-16	As shown
	Agapanthus albus		
	Lavandula angustifolia	BR 14-16	As shown
	Anemone x hybrida		

Species rich Grassland /Wildflower Mix:

Supplied by Design by Nature, Kilkenny, or similar approved to be seeded with as per specialist suppliers instruction. Seed Mix may be altered by wildflower specialist on final examination of site and soil conditions post construction.

Irish Wildflower Conservation Grade Seed Mixture:
 Range: Wild Flower Mixtures (Code WF)
 Product Name: Biodiversity Wildflower Meadow Mixture (Tolerates light-shade)
 Product Code: WF02

Description:
 WF02 is a medium to tall mixture for any normal dry to moist soil and some species will grow in semi-shaded places especially those enriched with humus or rotted leaves, hence the addition of bluebell and other wood species.

Mixture Specifications:
 pH range: Suits mid range soils neutral Ph.
 Aspect: Sunny to slightly shaded such as a meadow running up to the shade of a tree
 Life Cycle: Contains Cornfield Annuals, Perennials and Biennials
 Height Range: 8cm - 18cm
 Flowering Period: May to September.
 Fertility Range: Will grow on any soil, the less fertile the soil, the less cutting will be required.
 Wintergreen: Moderate

Species List:
 Annual: Mayweed, Birdfoot Trefoil, Black Meddock, Bladder Campion, Bluebell, Burdock, Cat's Ear, Common Sorrel, Corn Marigold, Corn Poppy, Corn Spurry, Conocockle, Cornflower, Cowslip, Devil's-bit Scabious, Eyebright, Field Scabious, Flag Iris, Fleabane, Fowlwe, Garlic Hedge Mustard, Henry Agrimony, Honey Plantain, Kidney Vetch, Ladies Am Lace, Lady's Bedstraw, Common Century, Lesser Knotweed, Musk Mallow, Marjoram, Meadow Buttercup, Meadowsweet, Mullein, Ox-eye Daisy, Pincapple Mayweed, Purple Loosetrite, Ragged Robin, Red Bartsia, Red Campion, Red Clover, Ribwort Plantain, Rough Hawkbit, Selfheal, Shepherd's Purse, Smooth Hawkbit, St. Johnswort, Teasel, Vetch Common, Wild, White Campion, Wild Angelica, Wild Carrot, Wild Valerian, Woodwort, Yarrow, Yellow Agrimony, Yellow Rattle

Seed Sowing Rates:
 Normal sowing rates:
 Pure wildflowers - no grass, 1.5 grams per metre.
 Added grass seed: 1.5 grams per metre (depending on grass species).



Sheet 2 - Planting Proposals



www.hayesryan.com
 Kilmead, Athy, Co. Kildare.
 info@hayesryan.com
 Tel 01-8572095